

# PRODUCT OVERVIEW NGAL

## (Neutrophil Gelatinase-Associated Lipocalin)

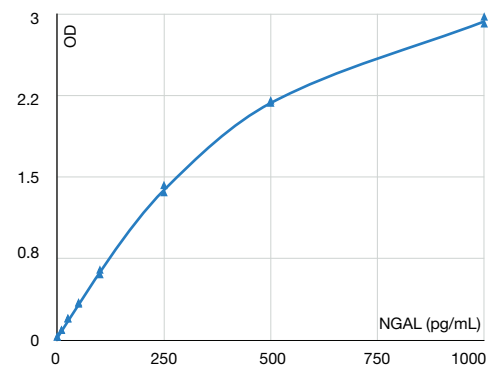


NGAL in nephrotoxicity  
– Bridging the gap in drug development

### ELISA KITS

Cat. No.	Size	Name
<b>KIT 036 *</b>	96 wells	NGAL ELISA KIT
<b>WASH 036-30</b>	30mL	25x wash solution
<b>WASH 036-250</b>	250mL	25x wash solution
<b>KIT 037</b>	96 wells	NGAL Rapid ELISA KIT
<b>WASH 037-30</b>	30mL	25x wash solution
<b>WASH 037-250</b>	250mL	25x wash solution

Human NGAL ELISA Kit (KIT 036) - Calibration curve



### ANTIBODIES

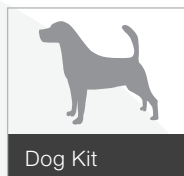
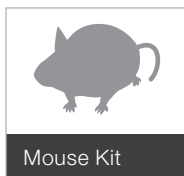
Cat. No.	Size	Application
<b>ABS 038-04</b>	200 µg, 1 mg	ELISA, WB
<b>ABS 038-14</b>	200 µg, 1 mg	ELISA, WB
<b>ABS 038-14B-005</b>	50 µg	ELISA, WB
<b>ABS 062-14</b>	200 µg, 1 mg	ELISA
<b>ABS 062-33</b>	200 µg, 1 mg	ELISA
<b>ABS 062-14B-005</b>	50 µg	ELISA

Cat. No.	Size	Application
<b>ABS 038-15</b>	200 µg, 1 mg	ELISA, WB
<b>ABS 038-26</b>	200 µg, 1 mg	ELISA, WB
<b>ABS 038-15B-005</b>	50 µg	ELISA, WB
<b>HYB 211-01</b>	200 µg, 1 mg	ELISA, IHC, WB
<b>HYB 211-02</b>	200 µg, 1 mg	ELISA, IHC, WB
<b>HYB 211-02B-005</b>	50 µg	ELISA, WB

NGAL matched pairs from BioPorto for sandwich ELISA assay setup to measure Human NGAL

	Capture antibody						
	HYB 211-01	ABS 038-04	ABS 038-14	ABS 038-15	ABS 038-26	ABS 062-14	ABS 062-33
Biotinylated Detection antibody	HYB 211-02B	NGAL	NGAL	NGAL		NGAL	NGAL
	ABS 038-14B	–	NGAL	<b>NGAL homodimer</b>	NGAL	NGAL	NGAL
	ABS 038-15B	–	NGAL	<b>NGAL Total</b>	–	NGAL	NGAL
	ABS 062-14B	–	–	–	–	–	<b>NGAL monomer</b>

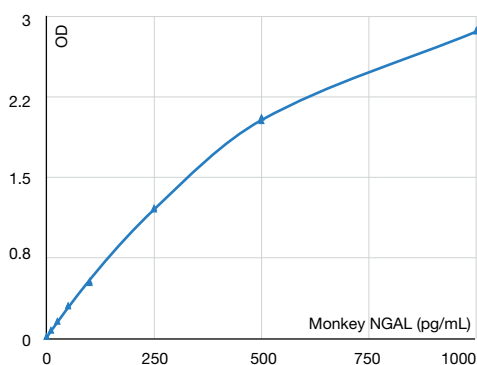
\* More than 80 primary references



## ELISA KITS

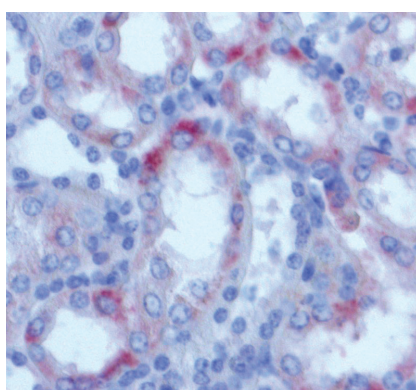
Cat. No.	Name
<b>KIT 042</b>	Mouse NGAL ELISA Kit
<b>KIT 043</b>	Dog NGAL ELISA Kit
<b>KIT 044</b>	Pig NGAL ELISA Kit
<b>KIT 045</b>	Monkey NGAL ELISA Kit
<b>KIT 046</b>	Rat NGAL ELISA Kit

- Ready-to-use working solutions
- Up to 40 samples in duplicate
- Pre-coated 96-well ELISA plate
- Ready-to-use on standard equipment



Monkey NGAL antibody pair (ABS 063-56 and ABS 063-68B)

Positive staining of renal tubular cell cytoplasm, using mouse monoclonal antibody against pig NGAL (Cat. no. ABS 048-28). Courtesy of Oscar McCook, University of Ulm.



## ANTIBODIES

Rat		
Cat. No.	Size	Application
<b>ABS-039-08</b>	200 µg, 1 mg	ELISA, IHC
<b>ABS 039-15</b>	200 µg, 1 mg	ELISA
<b>ABS 039-32</b>	200 µg, 1 mg	ELISA, WB
<b>ABS 039-32B-005</b>	50 µg	ELISA

Mouse		
Cat. No.	Size	Application
<b>ABS 043-10</b>	200 µg, 1 mg	ELISA, WB
<b>ABS 043-29</b>	200 µg, 1 mg	ELISA, WB, IHC
<b>ABS 043-29B-005</b>	50 µg	ELISA

Dog		
Cat. No.	Size	Application
<b>ABS 047-14</b>	200 µg, 1 mg	ELISA, WB
<b>ABS 047-17</b>	200 µg, 1 mg	ELISA, WB
<b>ABS 047-14B-005</b>	50 µg	ELISA, WB

Pig		
Cat. No.	Size	Application
<b>ABS 048-17</b>	200 µg, 1 mg	ELISA, WB
<b>ABS 048-28</b>	200 µg, 1 mg	ELISA, WB, IHC
<b>ABS 048-28B-005</b>	50 µg	ELISA, WB

Monkey		
Cat. No.	Size	Application
<b>ABS 063-56</b>	200 µg, 1 mg	ELISA, IHC
<b>ABS 063-68</b>	200 µg, 1 mg	ELISA
<b>ABS 063-68-005</b>	100 µg	ELISA

### Matching pair

Within each species (mouse, rat, pig, dog and monkey) the listed antibodies are matched pairs and can be used in sandwich ELISA.



BioPorto Diagnostics A/S  
Grusbakken 8  
DK-2820 Gentofte  
Denmark

Phone (+45) 4529 0000  
Fax (+45) 4529 0001  
E-mail [info@bioporto.com](mailto:info@bioporto.com)  
Web [www.bioporto.com](http://www.bioporto.com)  
[www.ngal.com](http://www.ngal.com)